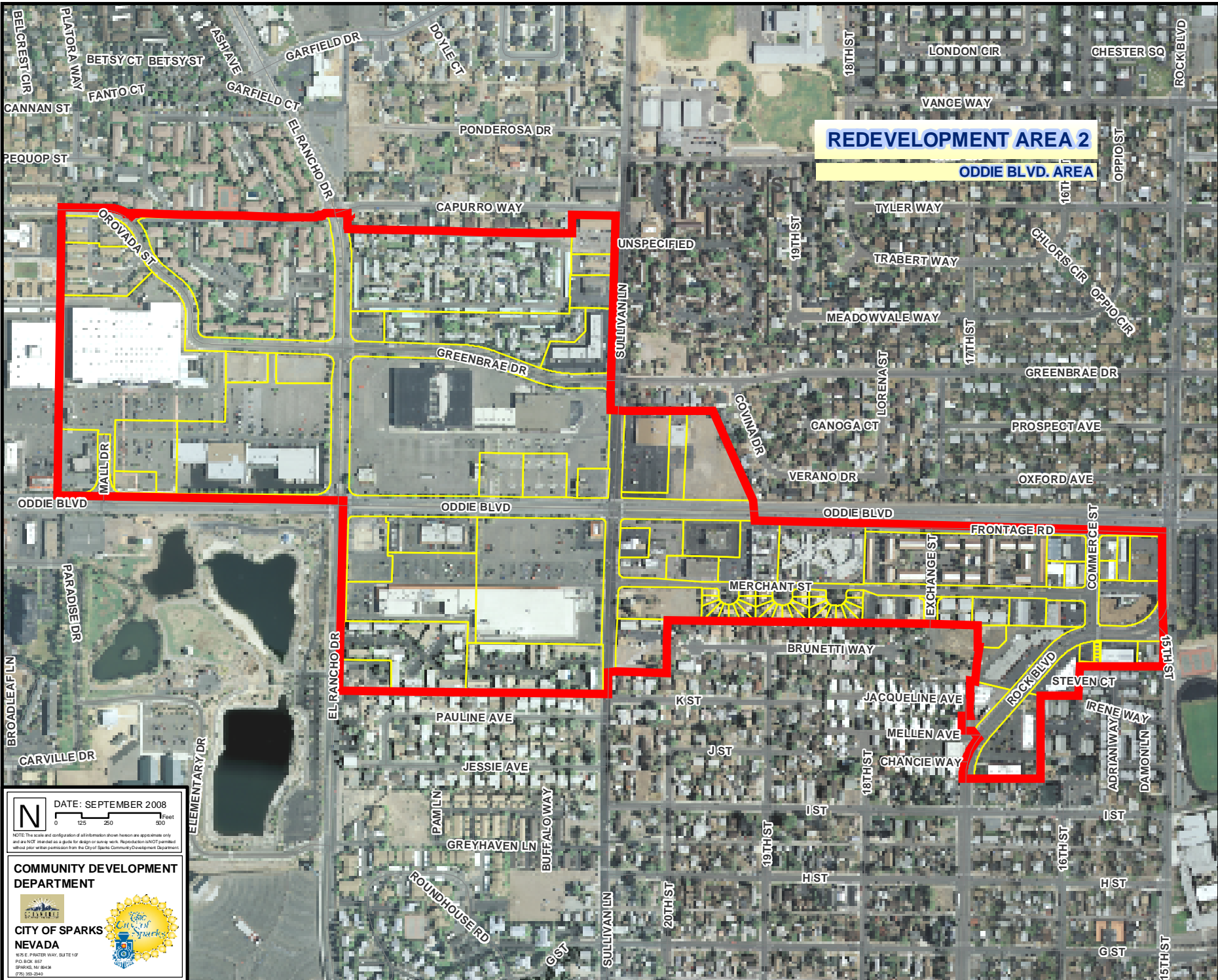


REDEVELOPMENT AREA 2
ODDIE BLVD. AREA



N DATE: SEPTEMBER 2008
 0 125 250 500 Feet
NOTE: The scale and configuration of information shown herein are approximate only and are NOT intended as a guide for design or survey work. Reproduction is NOT permitted without prior written permission from the City of Sparks Community Development Department.

COMMUNITY DEVELOPMENT DEPARTMENT



CITY OF SPARKS NEVADA
 515 E. FRONTIER HWY, SUITE 119
 P.O. BOX 857
 SPARKS, NV 89434
 (775) 353-2345